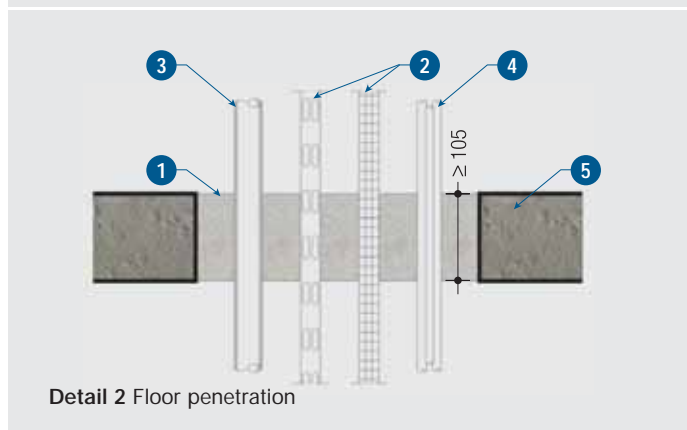
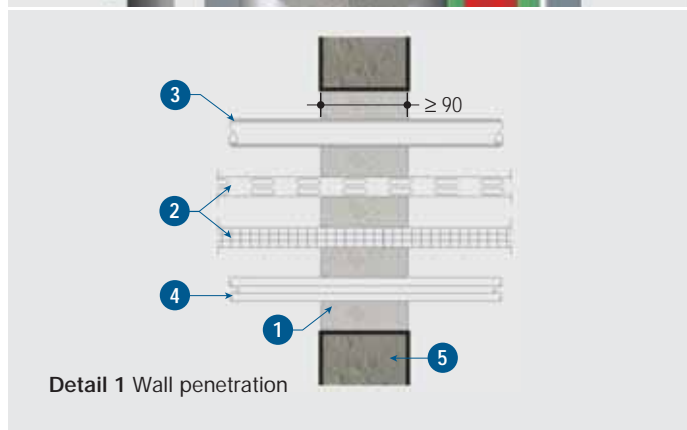
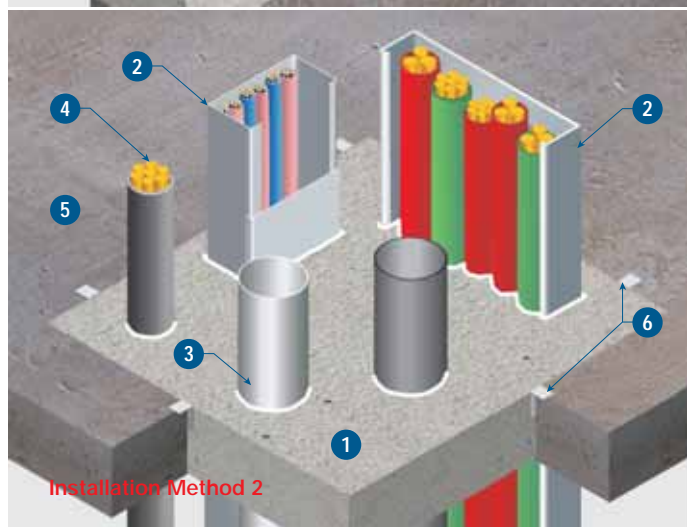
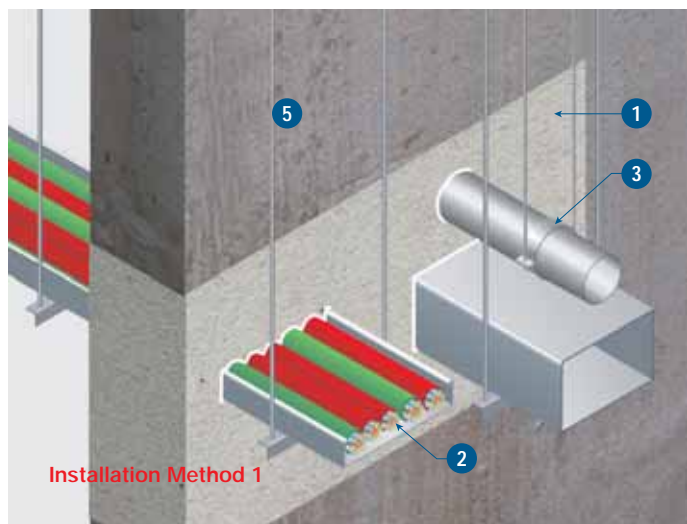


Promat



PROMASEAL[®] Mortar Penetration Seals on Floors/Slabs/Walls





PROMASEAL® Mortar is a specially formulated, lightweight, hydraulic cement composition supplied as a pre-mixed dry powder for on-site addition of water. It can be trowelled into position for sealing the openings required for the passage of cables and metal pipes through walls and floors, thus in the event of fire, preventing the spread of fire and smoke into another compartment.

PROMASEAL® Mortar has been successfully tested and assessed to BS 476: Part 20: 1987, AS 1530: Part 4 and AS 4072: Part 1 for fire ratings up to 4 hours depending on service penetration. Insulation criteria will vary dependent upon the building element, the type and size of services.

TECHNICAL DATA

4 hours fire rating, integrity in accordance with the criteria of BS 476: Part 20, AS 1530: Part 4 and AS 4072: Part 1. Insulation achieved will be dependent upon the building element and type of services.

- 1 PROMASEAL® Mortar, wall penetration = 90mm
floor penetration = 105mm
- 2 Electric cables and cable trays
- 3 Metal pipe
- 4 Telecommunication cables
- 5 Wall elements or floor slabs
- 6 25mm wide Zed clips at nominal 300mm centres

NOTES:

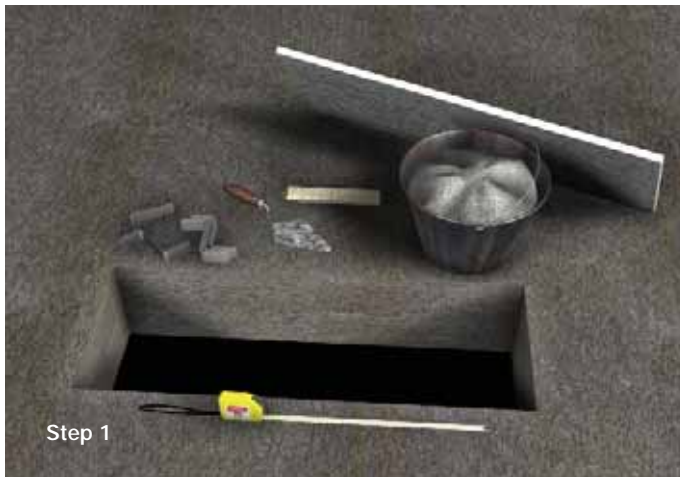
Maximum size of opening - Floors 600 x 400mm;
Walls 600 x 600mm.

Larger openings can also be protected. Please consult Promat Technical Department for support details.

The system approvals detailed above may differ slightly in some territories, please consult your local Promat Technical Department for details.

Drawings shown are schematic only. For further details please refer to Installation Sheet.

For floor applications 25mm wide Zed Clips (30mm x 50mm x 30mm x 1.0mm) must be placed around the top of the opening (at 300mm centres). Where the mortar abuts a wall this clip is replaced with a 25mm wide L-clip (100mm x 30mm x 1.0mm) fixed to the wall, ensuring that at least 50mm is below the top of the mortar.



Step 1



Step 2



Step 3



Step 4

Step 1

Measure the opening that needs to be sealed. Ensure that the opening has sufficient depth to place mortar of sufficient thickness to achieve the required fire resistance level. If necessary, the mortar depth may be raised above the level of the structural element.

Step 2

Place in the formwork, which can be virtually anything as long as it stays in place until the mortar sets, i.e., 30mm thick polystyrene sheet, plasterboard, plywood or PROMATECT® boards. It is to be cut for a tight fit into the opening and around services. The formwork may be fixed into place by nails, screws, propped or supported on steel angle or just friction fitted.

Step 3

Next, place galvanised steel “Zed” clips, which can be fabricated simply with steel sheets at 300mm centres. Place angles if one side is a wall.

Step 4

It is advisable to use an electric drill with mixing blade to ensure that the mortar is mixed thoroughly. Trowel the mortar mix into the opening, placing it first on the “Zed” clips to hold it in place. Fill the opening with mortar to required depth as specified.

Step 5

Once the mortar has set, it is advisable to seal around all penetrating services on top of the mortar with PROMASEAL® Acrylic Sealant in case of small fractures from movement. For large floor openings, it is a wise precaution to place warning signs informing the general public that the seal is non-loadbearing.



Step 5

For latest information of the Promat Asia Pacific organisation contact details, please refer to www.promat-ap.com

ASIA PACIFIC HEADQUARTERS

Promat International (Asia Pacific) Ltd.
Unit 19-02-01, Level 2 PNB Damansara
No.19 Lorong Dungun, Damansara Heights
50490 Kuala Lumpur
MALAYSIA
Tel: +60 (3) 2095 5111
Fax: +60 (3) 2095 6111
Email: info@promat-ap.com

AUSTRALIA

Promat Australia Pty. Ltd.
1 Scotland Road, Mile End South
Adelaide, SA 5031
Tel: +61 1800 30 20 20
Fax: +61 (8) 8352 1014
Email: mail@promat.com.au

New South Wales Office
Promat Australia Pty. Ltd.
Unit 1, 175 Briens Road
Northmead, NSW 2152
Tel: +61 1800 30 20 20
Fax: +61 (2) 9630 0258
Email: mail@promat.com.au

Victoria Office
Promat Australia Pty. Ltd.
3/273 Williamstown Road
Port Melbourne, VIC 3207
Tel: +61 1800 30 20 20
Fax: +61 (3) 9645 3844
Email: mail@promat.com.au

Western Australia Office
Promat Australia Pty. Ltd.
Locked Bag 8
Subiaco, WA 6904
Tel: +61 1800 30 20 20
Fax: +61 1800 33 45 98
Email: mail@promat.com.au

CHINA

Promat China Ltd.
Room 504, Block B, Qi Lin Plaza
13-35 Pan Fu Road
510180 Guangzhou
Tel: +86 (20) 8136 1167
Fax: +86 (20) 8136 1372
Email: info@promat.com.cn

Beijing Office
Promat North China
(Division of Promat China Ltd.)
Room 1507 Building 5, SOHO Xiandaicheng
No.88 Jianguo Road, Chaoyang District
100022 Beijing
Tel: +86 (10) 8589 1254
Fax: +86 (10) 8589 2904
Email: info@promat.com.cn

HONG KONG

Promat International (Asia Pacific) Ltd.
Room 1010, C.C. Wu Building
302-308 Hennessy Road
Wanchai
Tel: +852 2836 3692
Fax: +852 2834 4313
Email: apromath@promat.com.hk

INDIA

Promat International (Asia Pacific) Ltd.
(India Representative Office)
S-4, Second Floor
B-87 Defence Colony
110024 New Delhi
Tel: +91 (11) 2433 1594
Fax: +91 (11) 2433 1595
Email: info-india@promat-asia.com

MALAYSIA

Promat (Malaysia) Sdn. Bhd.
Unit 19-02-01, Level 2 PNB Damansara
No.19 Lorong Dungun, Damansara Heights
50490 Kuala Lumpur
Tel: +60 (3) 2095 8555
Fax: +60 (3) 2095 2111
Email: info@promat.com.my

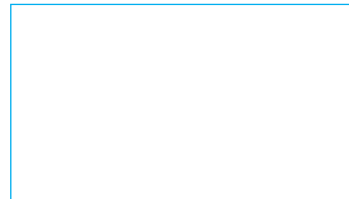
SINGAPORE

Promat Building System Pte. Ltd.
10 Science Park Road, #03-14 The Alpha,
Singapore Science Park II
Singapore 117684
Tel: +65 6776 7635
Fax: +65 6776 7624
Email: info@promat.com.sg

VIETNAM

Promat International (Asia Pacific) Ltd.
(Vietnam Representative Office)
Room 606 Giay Viet Plaza
180-182 Ly Chinh Thang Street
Ward 9, District 3, Hochiminh City
Tel: +84 (8) 931 5964
Fax: +84 (8) 931 5964
Email: phuong@promat-asia.com

Your local Promat supplier



For Promat International groups worldwide: www.promat-international.com

1. This document is formulated on the basis of information and experience available at the time of preparation. Promat is constantly reviewing and up dating all of its test data and reserve the right to change specifications without notice.
2. Promat is not responsible if recipients of Fire test reports, assessments or literature incorrectly interpret their contents and use products based on those interpretations.